

Commissioning Overview

Lion Energy Sanctuary Commissioning Overview

This guide covers the basic concepts of commissioning for the Lion Energy's Sanctuary System. Please note that this is not a step-by-step guide, as we are consistently upgrading the process. Instead, this guide covers the basics, and our applications will walk you through the best way to commission your system based on the revision of the sanctuary that is being commissioned.

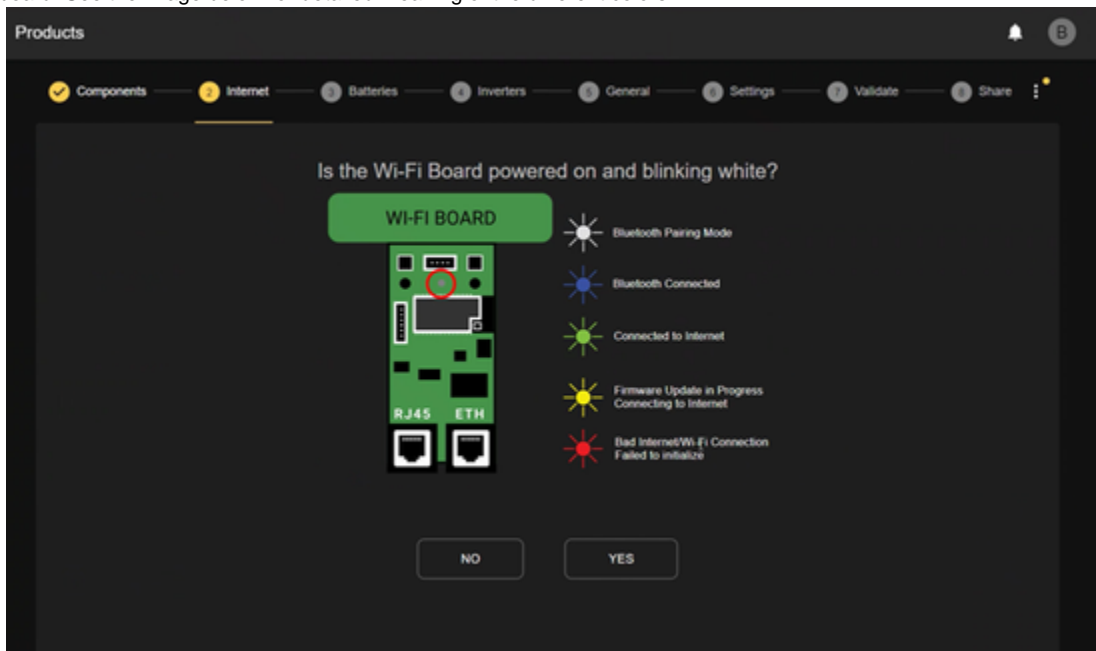
Disclaimer: ESS Troubleshooting and commissioning must be done by certified individuals only. Troubleshooting or commissioning without certification or express permission from Lion Energy can result in the voiding of a system's warranty.

Topics

- Connecting to the System's Communicator (WCM board)
- Configuring the Batteries
- Configuring the Inverters
- Selecting Settings
- Sharing the System
- Validation of Settings & System's Check

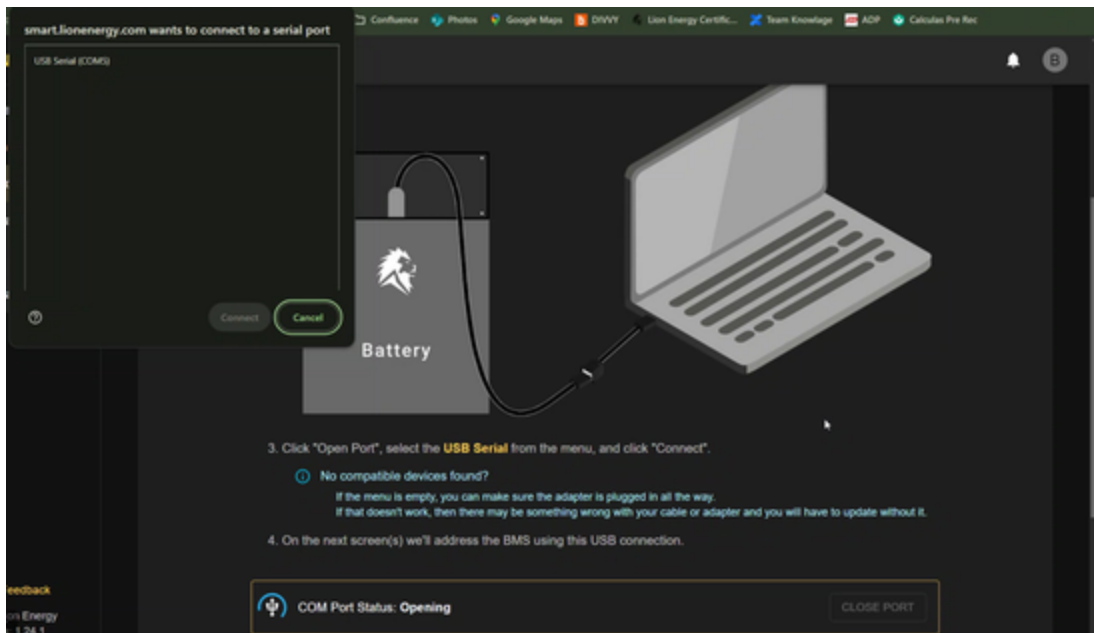
Connecting to the System's Communicator (WCM board)

The Sanctuary system uses a WIFI Communication Module (WCM) in order to connect to the internet, which will be the first step of commissioning a system. You can also hardwire in the internet via the "ETH" labelled port on the board. The WCM has an indicator light towards the top of the board. See the image below for detailed meaning of the different colors.



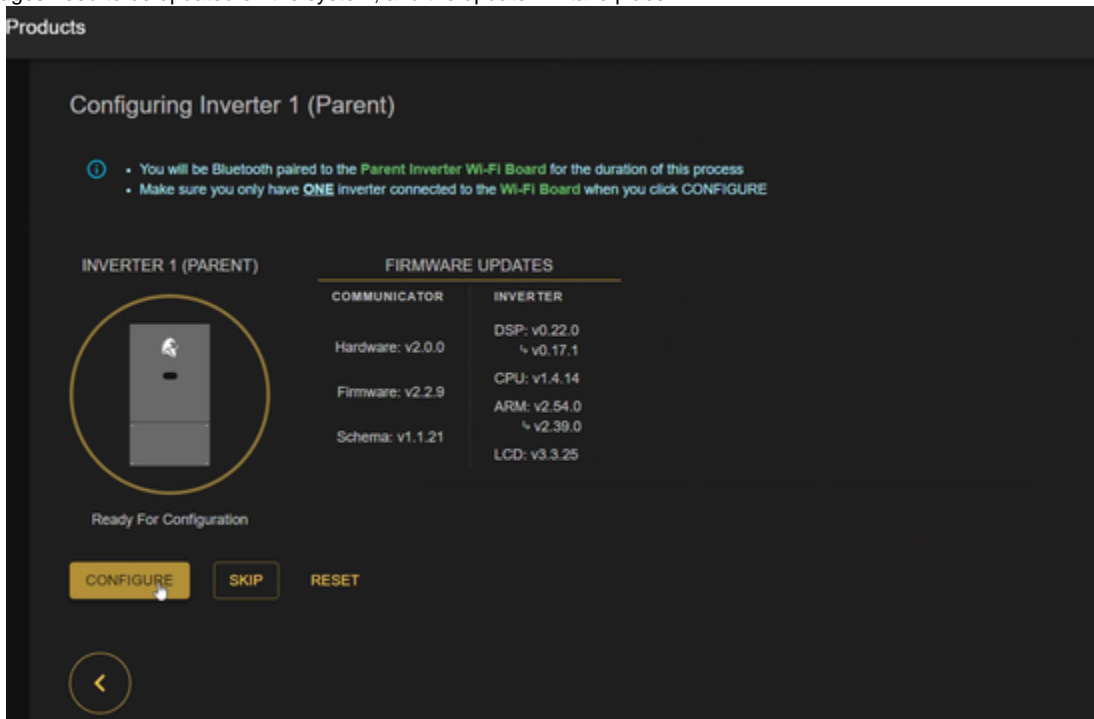
Configuring the Batteries

The sanctuary system uses Lion Energy's 13.5 KWh Lithium Iron phosphate batteries. Each battery communicates through RJ45 and has to be connected to the system. During the commissioning process, the batteries are serialized (given numbers), which allows for modular data to be sent and used. The commissioning process will walk you through serializing through the computer or via the WCM.



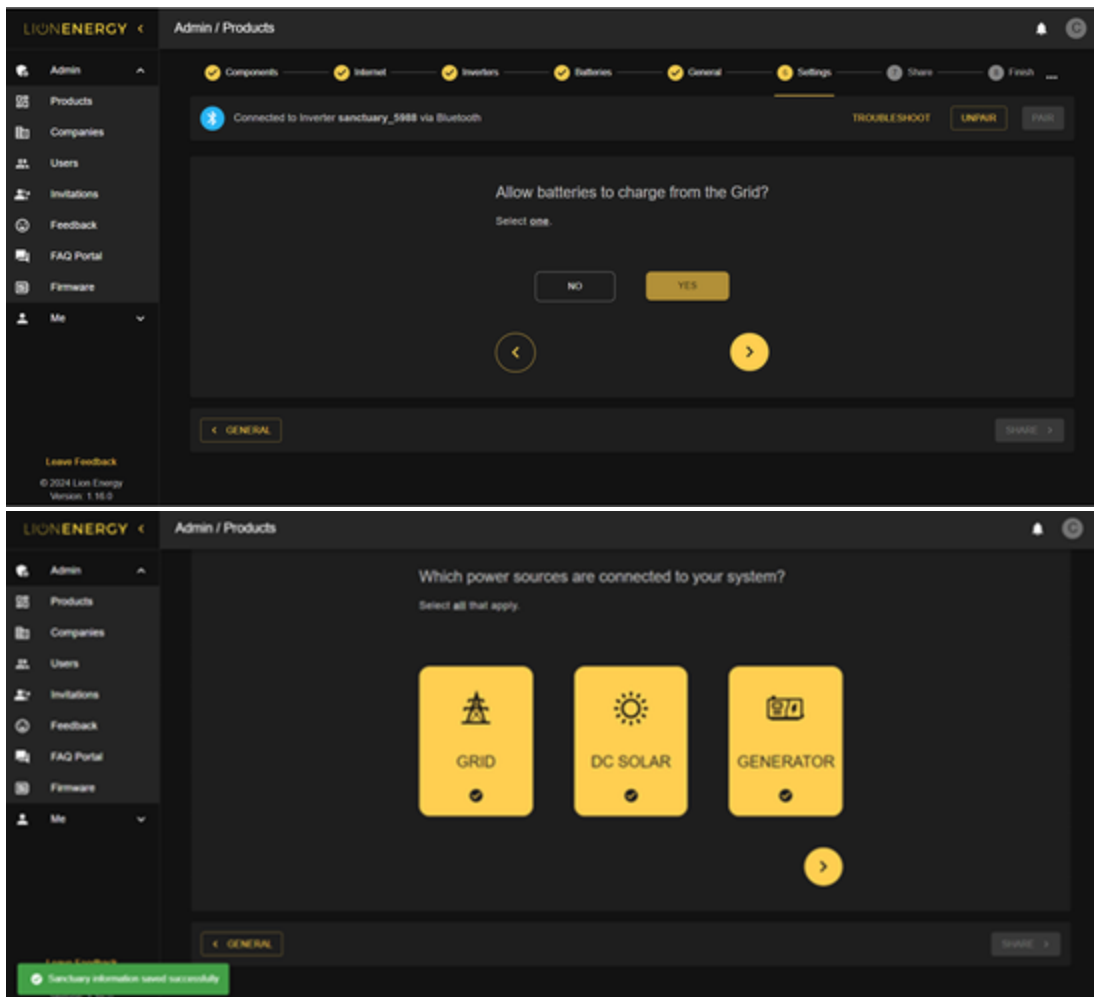
Configuring the Inverters

Because the Sanctuary system is modular, each inverter is configured individually, either via the WCM or the USB C port found inside the inverter. This is done to ensure that all inverters work in parallel. The commissioning process will present diagrams to show step-by-step which wires to plug into the WCM board in order to configure each inverter. Once the correct wiring has taken place, our servers will determine what software packages need to be updated on the system, and the update will take place.



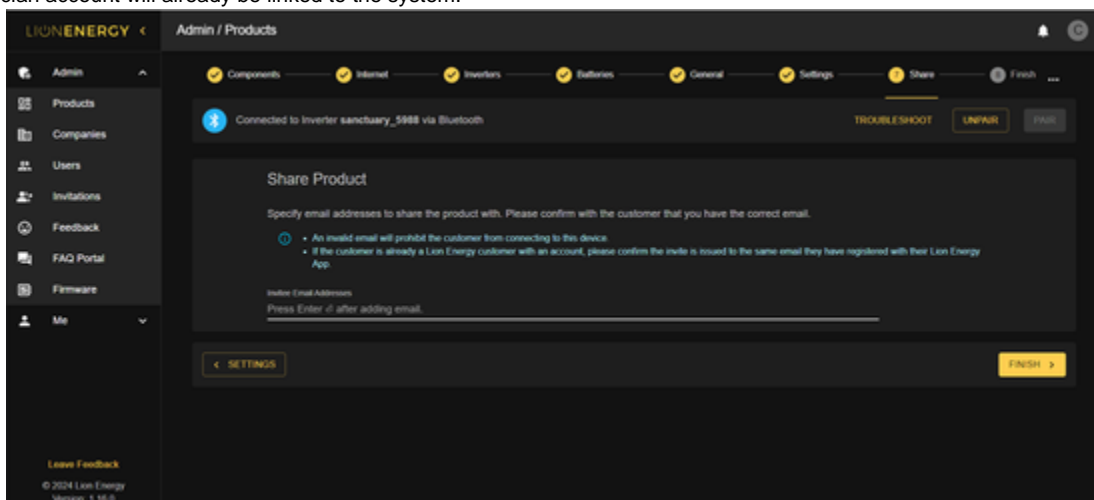
Selecting Settings

The Sanctuary system has several different modes that it can operate in and is designed to function different components. The system also functions on or off the grid. During the commissioning process, you will answer a questionnaire that will automatically set settings for the system based on your response. Don't worry if you want to change something later. As long as the system is connected to the internet, you will be able to adjust settings remotely whenever you need to.



Sharing a System

Sanctuary system monitoring access can be shared with anyone who has an email address. During the commissioning process you will be prompted to share the system with the system owner. If you already own the system and are commissioning it for yourself, you can skip this step as your technician account will already be linked to the system.



Validation of Settings & System Check

Towards the end of the commissioning process the Sanctuary system will validate it's settings and perform a systems check to ensure that everything was commissioned and is communicating properly. Once both have been completed the system will be ready to view. Once the

system has fully come online if a fault and or alarm is present be sure to look at our fault and alarm troubleshooting FAQ for specific troubleshooting guidance.

